

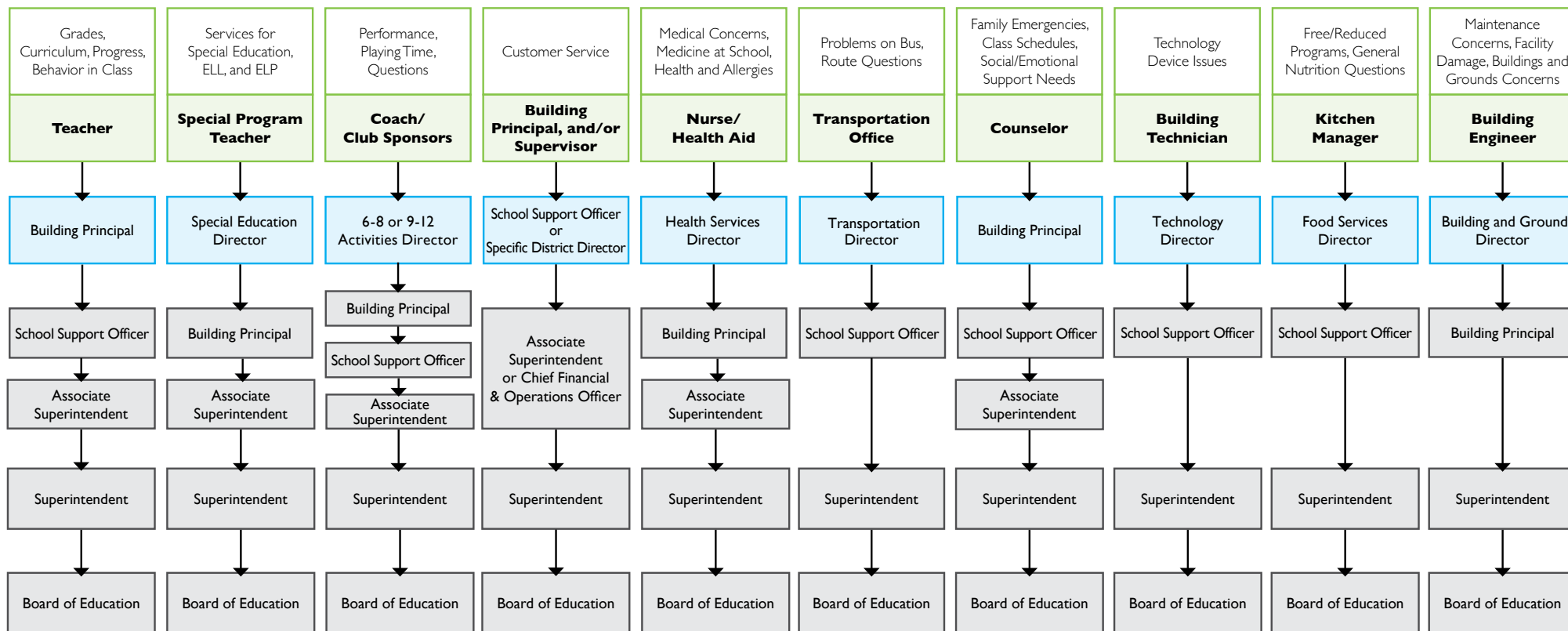
CLEAR CREEK AMANA COMMUNITY SCHOOL DISTRICT

Communication Guide for Addressing Questions and Concerns

The Clear Creek Amana Community School District recognizes that situations may arise where parents and community members have questions or concerns that need to be addressed. We strongly believe that all concerns are best dealt with using open communication and should be discussed by first talking with your child. This guide outlines the chain of communication for addressing concerns in the most efficient and effective manner.

If, after speaking with the involved staff member, and the issue has not been resolved, the individual may bring the concern to their immediate supervisor. The chart below will help determine who should be contacted next when and if further discussion is warranted. It should be noted if the concern involves the ethical behavior of a staff member or an individual's safety is compromised, the concern can be initially directed to the employee's immediate supervisor.

*Green indicates the recommended starting point. Blue indicates supervisor.



* Report bullying at this [LINK](#)

* Report immediate safety concerns to building principal.